

# NATURAL MINOR SCALES

*C Natural Minor Scale ("F" Concert Natural Minor)*

Musical notation for the C Natural Minor Scale in 2/4 time. The scale is written on a single treble clef staff. The key signature has two flats (Bb and Eb). The notes are: C, D, Eb, E, F, G, Ab, Bb, C, D, Eb, E, F, G, Ab, Bb, C. The first two octaves are shown, with the second octave ending on a double bar line.

*F Natural Minor Scale ("Bb" Concert Natural Minor)*

Musical notation for the F Natural Minor Scale in 2/4 time. The scale is written on a single treble clef staff. The key signature has three flats (Bb, Eb, and Ab). The notes are: F, G, Ab, Bb, C, D, Eb, F, G, Ab, Bb, C, D, Eb, F, G, Ab, Bb, F. The first two octaves are shown, with the second octave ending on a double bar line.

*Bb Natural Minor Scale ("Eb" Concert Natural Minor)*

Musical notation for the Bb Natural Minor Scale in 2/4 time. The scale is written on a single treble clef staff. The key signature has four flats (Bb, Eb, Ab, and Db). The notes are: Bb, C, D, Eb, F, G, Ab, Bb, C, D, Eb, F, G, Ab, Bb, C, D, Eb, Bb. The first two octaves are shown, with the second octave ending on a double bar line.

*Eb Natural Minor Scale ("Ab" Concert Natural Minor)*

Musical notation for the Eb Natural Minor Scale in 2/4 time. The scale is written on a single treble clef staff. The key signature has five flats (Bb, Eb, Ab, Db, and Gb). The notes are: Eb, F, G, Ab, Bb, C, D, Eb, F, G, Ab, Bb, C, D, Eb, F, G, Ab, Eb. The first two octaves are shown, with the second octave ending on a double bar line.

*Ab Natural Minor Scale ("Db" Concert Natural Minor)*

Musical notation for the Ab Natural Minor Scale in 2/4 time. The scale is written on a single treble clef staff. The key signature has six flats (Bb, Eb, Ab, Db, Gb, and Cb). The notes are: Ab, Bb, C, D, Eb, F, G, Ab, Bb, C, D, Eb, F, G, Ab, Bb, C, D, Ab. The first two octaves are shown, with the second octave ending on a double bar line.

*C#/Db Natural Minor Scale ("Gb" Concert Natural Minor)*

Musical notation for the C#/Db Natural Minor Scale in 2/4 time. The scale is written on a single treble clef staff. The key signature has seven flats (Bb, Eb, Ab, Db, Gb, Cb, and Fb). The notes are: C#, D, Eb, F, G, Ab, Bb, C#, D, Eb, F, G, Ab, Bb, C#, D, Eb, F, C#. The first two octaves are shown, with the second octave ending on a double bar line.

*F# Natural Minor Scale ("B" Concert Natural Minor)*

Musical notation for the F# Natural Minor Scale in 2/4 time. The scale is written on a single treble clef staff. The key signature has two sharps (F# and C#). The notes are: F#, G, Ab, Bb, C, D, Eb, F#, G, Ab, Bb, C, D, Eb, F#, G, Ab, Bb, F#. The first two octaves are shown, with the second octave ending on a double bar line.

*B Natural Minor Scale ("E" Concert Natural Minor)*

Musical notation for the B Natural Minor Scale in 2/4 time. The scale is written on a single treble clef staff. The key signature has one sharp (F#). The notes are: B, C, D, Eb, F, G, Ab, B, C, D, Eb, F, G, Ab, B, C, D, Eb, B. The first two octaves are shown, with the second octave ending on a double bar line.

*E Natural Minor Scale ("A" Concert Natural Minor)*

Musical notation for the E Natural Minor Scale in 2/4 time. The scale is written on a single treble clef staff. The key signature has no sharps or flats. The notes are: E, F, G, Ab, Bb, C, D, E, F, G, Ab, Bb, C, D, E, F, G, Ab, E. The first two octaves are shown, with the second octave ending on a double bar line.

*A Natural Minor Scale ("D" Concert Natural Minor)*

Musical notation for the A Natural Minor Scale in 2/4 time. The scale is written on a single treble clef staff. The key signature has no sharps or flats. The notes are: A, B, C, D, Eb, F, G, A, B, C, D, Eb, F, G, A, B, C, D, A. The first two octaves are shown, with the second octave ending on a double bar line.

*D Natural Minor Scale ("G" Concert Natural Minor)*

Musical notation for the D Natural Minor Scale in 2/4 time. The scale is written on a single treble clef staff. The key signature has two flats (Bb and Eb). The notes are: D, E, F, G, Ab, Bb, C, D, E, F, G, Ab, Bb, C, D, E, F, G, D. The first two octaves are shown, with the second octave ending on a double bar line.

*G Natural Minor Scale ("C" Concert Natural Minor)*

Musical notation for the G Natural Minor Scale in 2/4 time. The scale is written on a single treble clef staff. The key signature has one flat (F). The notes are: G, A, B, C, D, Eb, F, G, A, B, C, D, Eb, F, G, A, B, C, G. The first two octaves are shown, with the second octave ending on a double bar line.

# HARMONIC MINOR SCALES

*C Harmonic Minor Scale ("F" Concert Harmonic Minor)*



*F Harmonic Minor Scale ("Bb" Concert Harmonic Minor)*



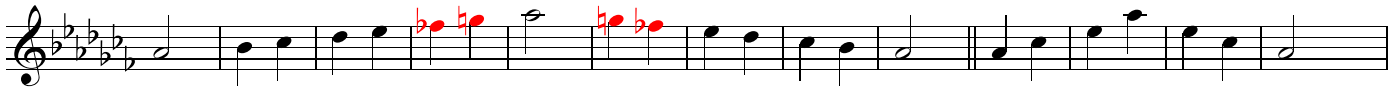
*Bb Harmonic Minor Scale ("Eb" Concert Harmonic Minor)*



*Eb Harmonic Minor Scale ("Ab" Concert Harmonic Minor)*



*Ab Harmonic Minor Scale ("Db" Concert Harmonic Minor)*



*C#/Db Harmonic Minor Scale ("Gb" Concert Harmonic Minor)*



*F# Harmonic Minor Scale ("B" Concert Harmonic Minor)*



*B Harmonic Minor Scale ("E" Concert Harmonic Minor)*



*E Harmonic Minor Scale ("A" Concert Harmonic Minor)*



*A Harmonic Minor Scale ("D" Concert Harmonic Minor)*



*D Harmonic Minor Scale ("G" Concert Harmonic Minor)*



*G Harmonic Minor Scale ("C" Concert Harmonic Minor)*



# MELODIC MINOR SCALES

*C Melodic Minor Scale ("F" Concert Melodic Minor)*

Musical notation for the C Melodic Minor Scale (F Concert Melodic Minor) in 2/4 time. The scale is written in treble clef with a key signature of two flats (Bb, Eb). The notes are: C4, D4, Eb4, E4, F4, G4, Ab4, A4, Bb4, B4, C5. The first octave is played ascending and the second octave descending.

*F Melodic Minor Scale ("Bb" Concert Melodic Minor)*

Musical notation for the F Melodic Minor Scale (Bb Concert Melodic Minor) in 2/4 time. The scale is written in treble clef with a key signature of three flats (Bb, Eb, Ab). The notes are: F4, G4, Ab4, A4, Bb4, C5, Db5, D4, Eb4, E4, F4. The first octave is played ascending and the second octave descending.

*Bb Melodic Minor Scale ("Eb" Concert Melodic Minor)*

Musical notation for the Bb Melodic Minor Scale (Eb Concert Melodic Minor) in 2/4 time. The scale is written in treble clef with a key signature of four flats (Bb, Eb, Ab, Db). The notes are: Bb4, C5, Db5, D4, Eb4, E4, F4, G4, Ab4, A4, Bb4. The first octave is played ascending and the second octave descending.

*Eb Melodic Minor Scale ("Ab" Concert Melodic Minor)*

Musical notation for the Eb Melodic Minor Scale (Ab Concert Melodic Minor) in 2/4 time. The scale is written in treble clef with a key signature of five flats (Bb, Eb, Ab, Db, Gb). The notes are: Eb4, F4, G4, Ab4, Bb4, C5, Db5, D4, Eb4, E4, F4. The first octave is played ascending and the second octave descending.

*Ab Melodic Minor Scale ("Db" Concert Melodic Minor)*

Musical notation for the Ab Melodic Minor Scale (Db Concert Melodic Minor) in 2/4 time. The scale is written in treble clef with a key signature of six flats (Bb, Eb, Ab, Db, Gb, Cb). The notes are: Ab4, Bb4, C5, Db5, Eb5, D4, Eb4, E4, F4, G4, Ab4. The first octave is played ascending and the second octave descending.

*C#/Db Melodic Minor Scale ("Gb" Concert Melodic Minor)*

Musical notation for the C#/Db Melodic Minor Scale (Gb Concert Melodic Minor) in 2/4 time. The scale is written in treble clef with a key signature of seven flats (Bb, Eb, Ab, Db, Gb, Cb, Fb). The notes are: Cb5, Db5, Eb5, D4, Eb4, E4, F4, G4, Ab4, A4, Bb4. The first octave is played ascending and the second octave descending.

*F# Melodic Minor Scale ("B" Concert Melodic Minor)*

Musical notation for the F# Melodic Minor Scale (B Concert Melodic Minor) in 2/4 time. The scale is written in treble clef with a key signature of two sharps (F#, C#). The notes are: F#4, G4, A4, B4, C5, B4, A4, G4, F#4, E4, D4. The first octave is played ascending and the second octave descending.

*B Melodic Minor Scale ("E" Concert Melodic Minor)*

Musical notation for the B Melodic Minor Scale (E Concert Melodic Minor) in 2/4 time. The scale is written in treble clef with a key signature of one sharp (F#). The notes are: B4, C5, D5, E5, F#5, E4, D4, C4, B4, A4, G4. The first octave is played ascending and the second octave descending.

*E Melodic Minor Scale ("A" Concert Melodic Minor)*

Musical notation for the E Melodic Minor Scale (A Concert Melodic Minor) in 2/4 time. The scale is written in treble clef with a key signature of one sharp (F#). The notes are: E4, F#4, G4, A4, B4, C5, B4, A4, G4, F#4, E4, D4. The first octave is played ascending and the second octave descending.

*A Melodic Minor Scale ("D" Concert Melodic Minor)*

Musical notation for the A Melodic Minor Scale (D Concert Melodic Minor) in 2/4 time. The scale is written in treble clef with a key signature of no sharps or flats. The notes are: A4, B4, C5, D5, E5, D4, C4, A4, G4, F4, E4. The first octave is played ascending and the second octave descending.

*D Melodic Minor Scale ("G" Concert Melodic Minor)*

Musical notation for the D Melodic Minor Scale (G Concert Melodic Minor) in 2/4 time. The scale is written in treble clef with a key signature of two flats (Bb, Eb). The notes are: D4, Eb4, F4, G4, Ab4, Bb4, C5, Bb4, Ab4, G4, F4, Eb4. The first octave is played ascending and the second octave descending.

*G Melodic Minor Scale ("C" Concert Melodic Minor)*

Musical notation for the G Melodic Minor Scale (C Concert Melodic Minor) in 2/4 time. The scale is written in treble clef with a key signature of one flat (Bb). The notes are: G4, Ab4, Bb4, C5, Bb4, Ab4, G4, F4, E4, D4, C4. The first octave is played ascending and the second octave descending.